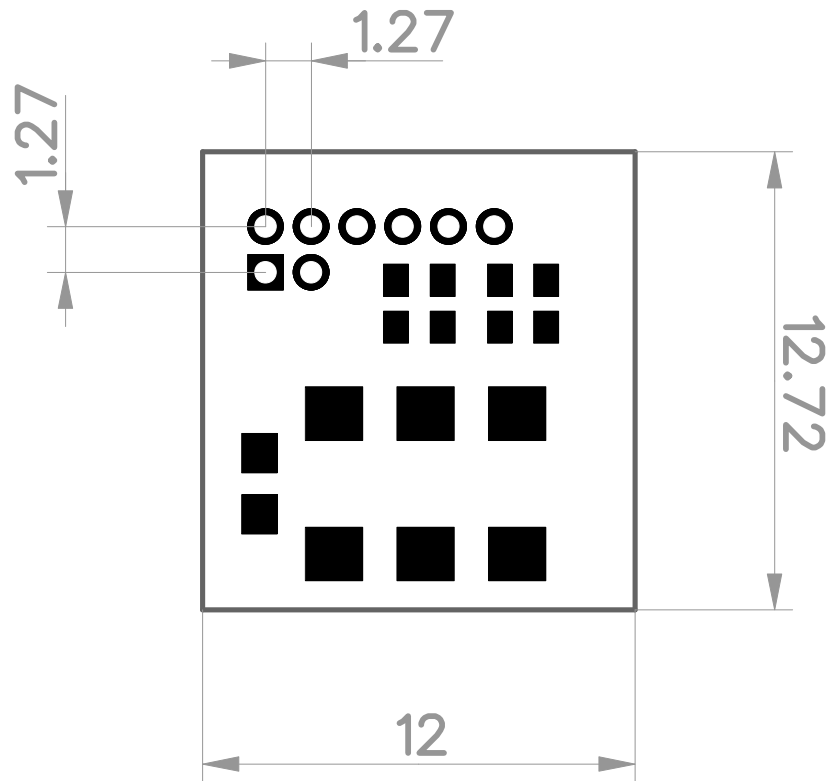


*LVPECL version: $R1=R2=200R$

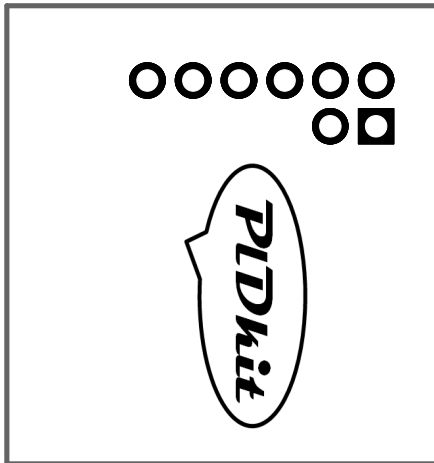
LVDS version: $R1=R2=NC$

Differential oscillator peripheral module			
MODEL: XPMOSC	Rev. A	20.05.2017	Sheet 1/1
SCHEMATICS			PLDkit OU www.pldkit.com



All dimensions in mm
 Board size deviation $\pm 1\text{mm}$

Differential oscillator peripheral module			
MODEL: XPMOSC	Rev. A	30.01.2017	Sheet 1/1
PCB LAYOUT			PLDkit OU www.pldkit.com



Differential oscillator peripheral module			
MODEL: XPMOSC	Rev. A	30.01.2017	Sheet 1/1
PCB LAYOUT			PLDkit OU www.pldkit.com