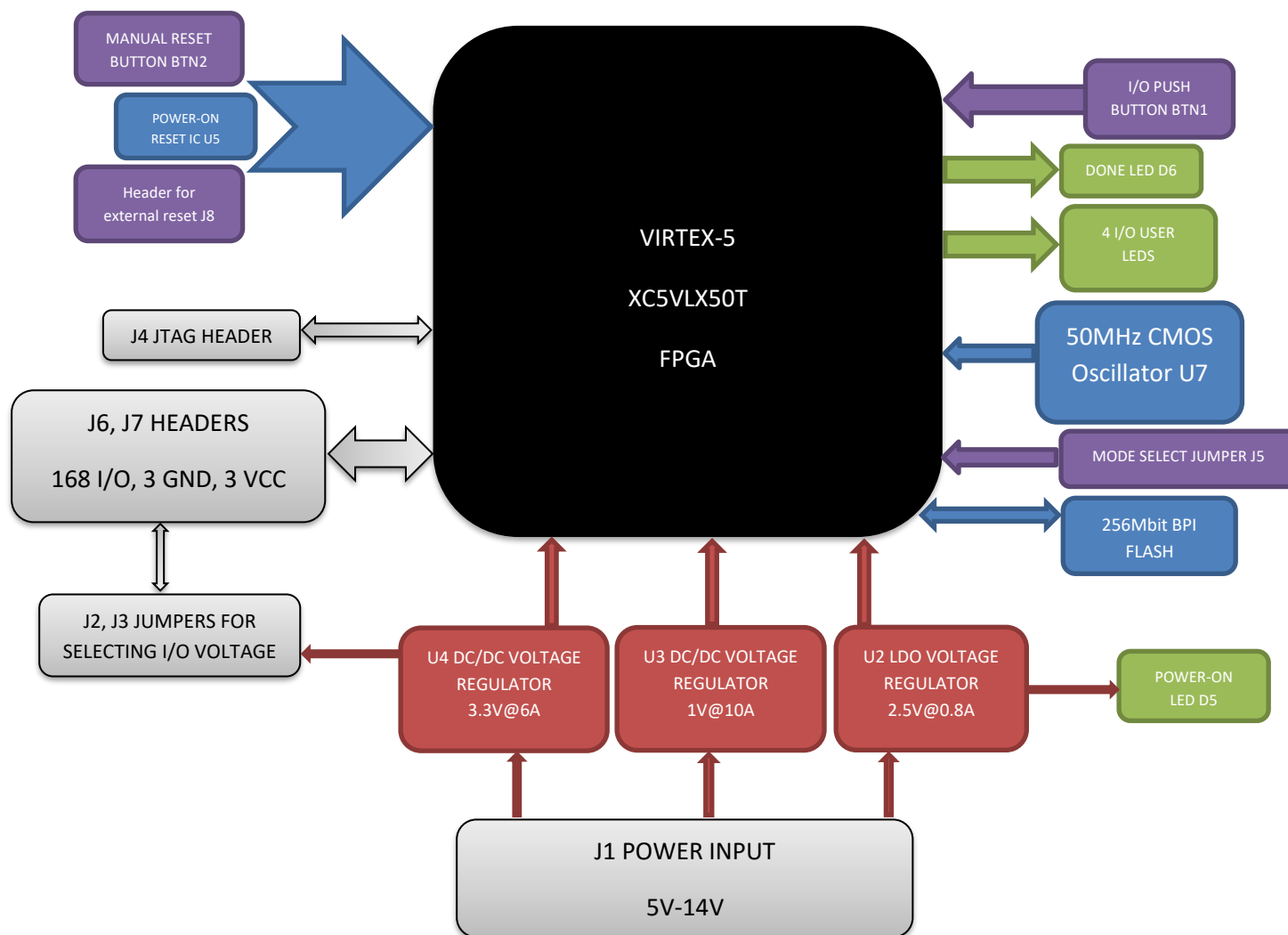
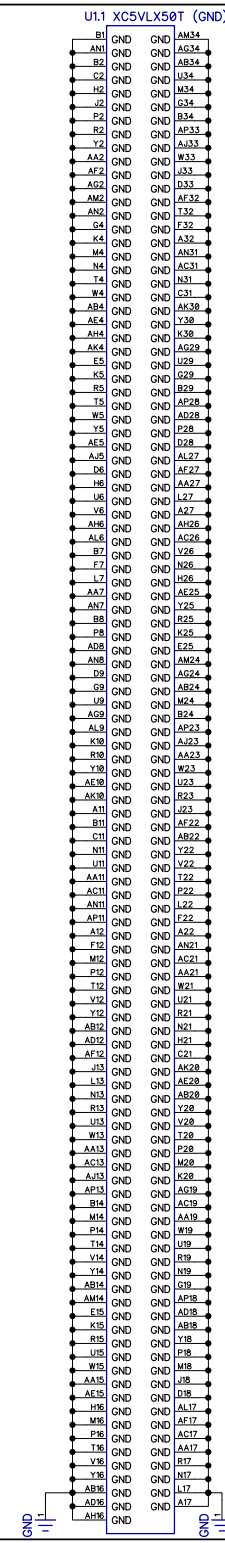
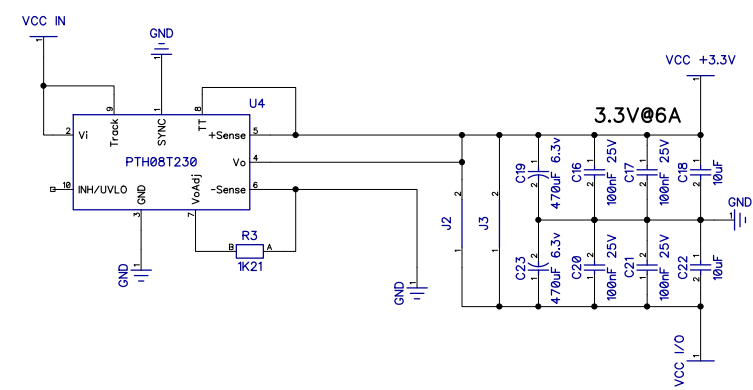
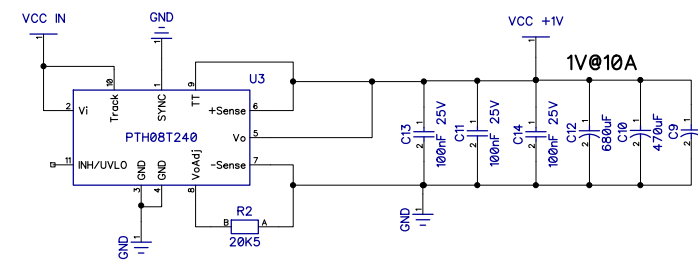
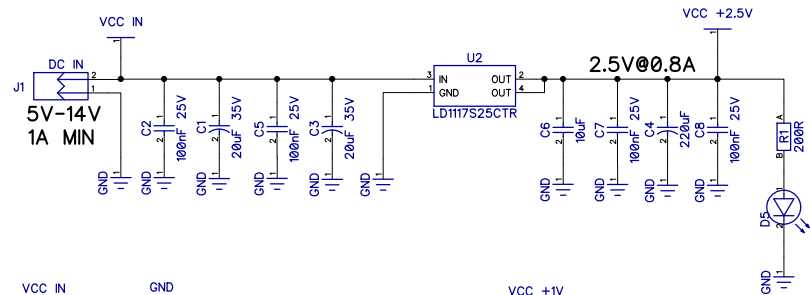
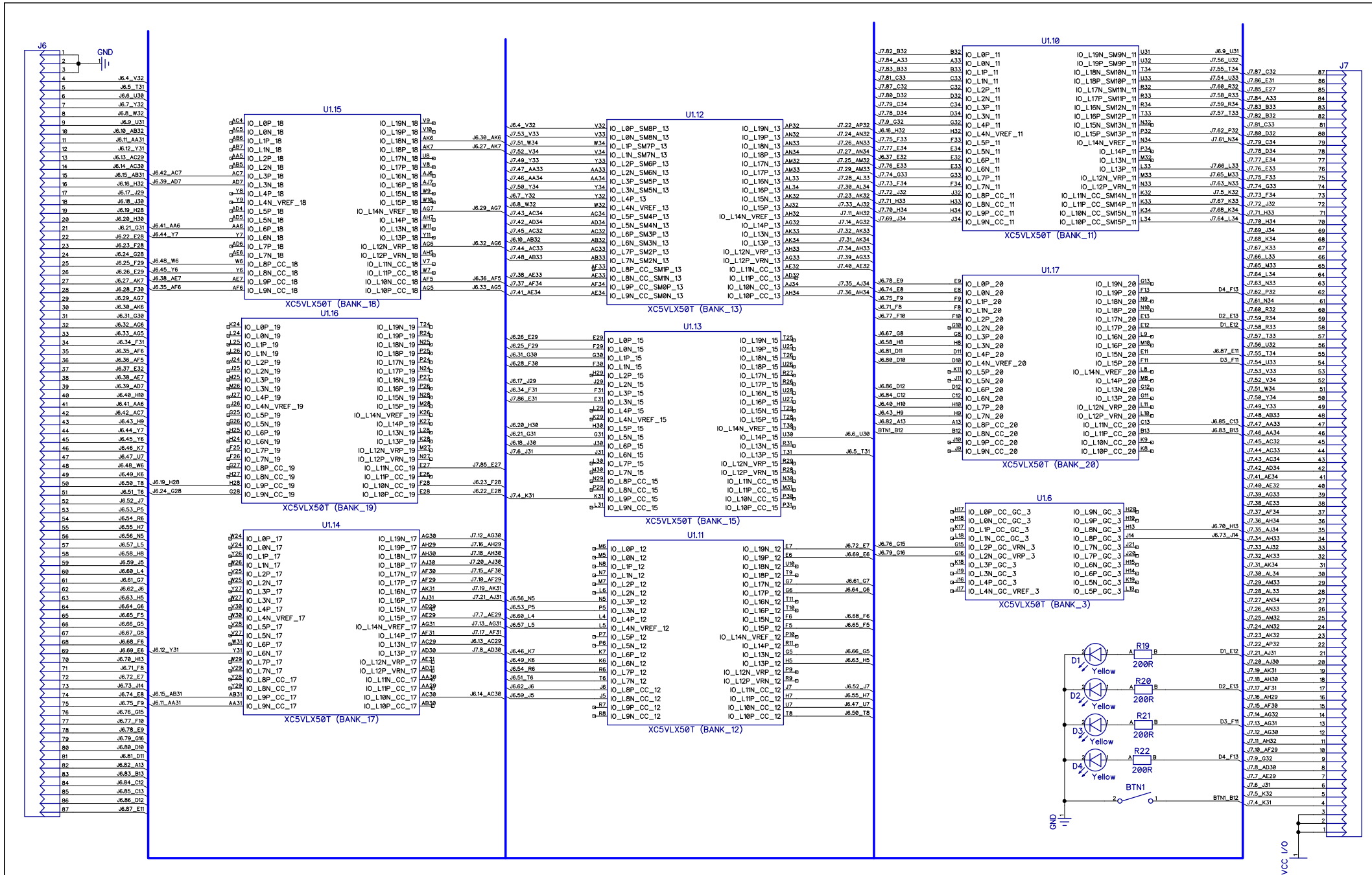


XILINX VIRTEX-5 FPGA MODULE BLOCK SCHEME

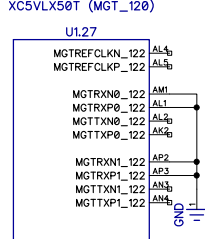
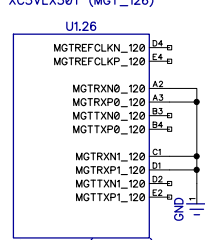
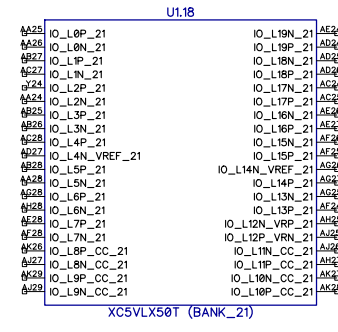
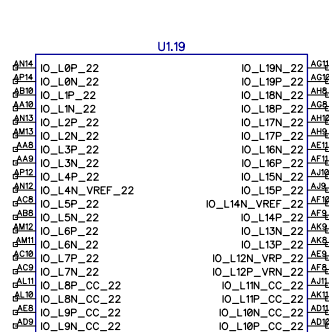
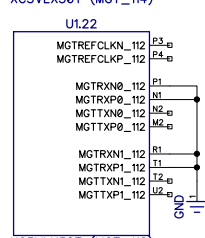
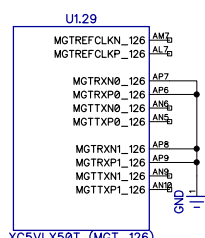
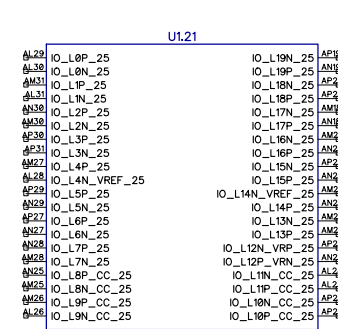
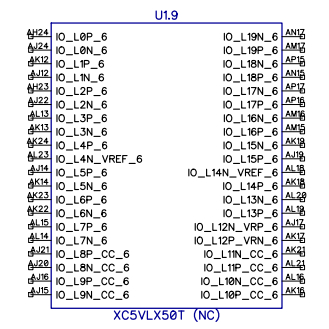
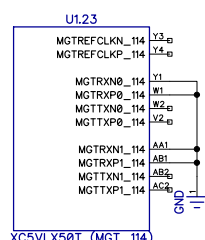
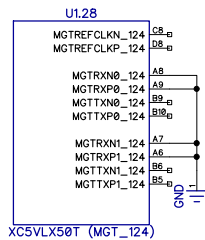
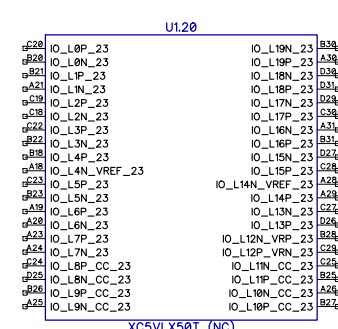
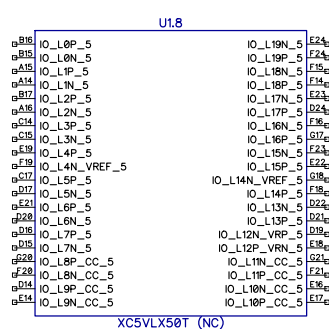
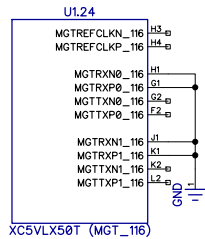
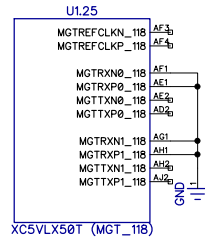
MODEL: XM2F5-50-256 50M Rev.A



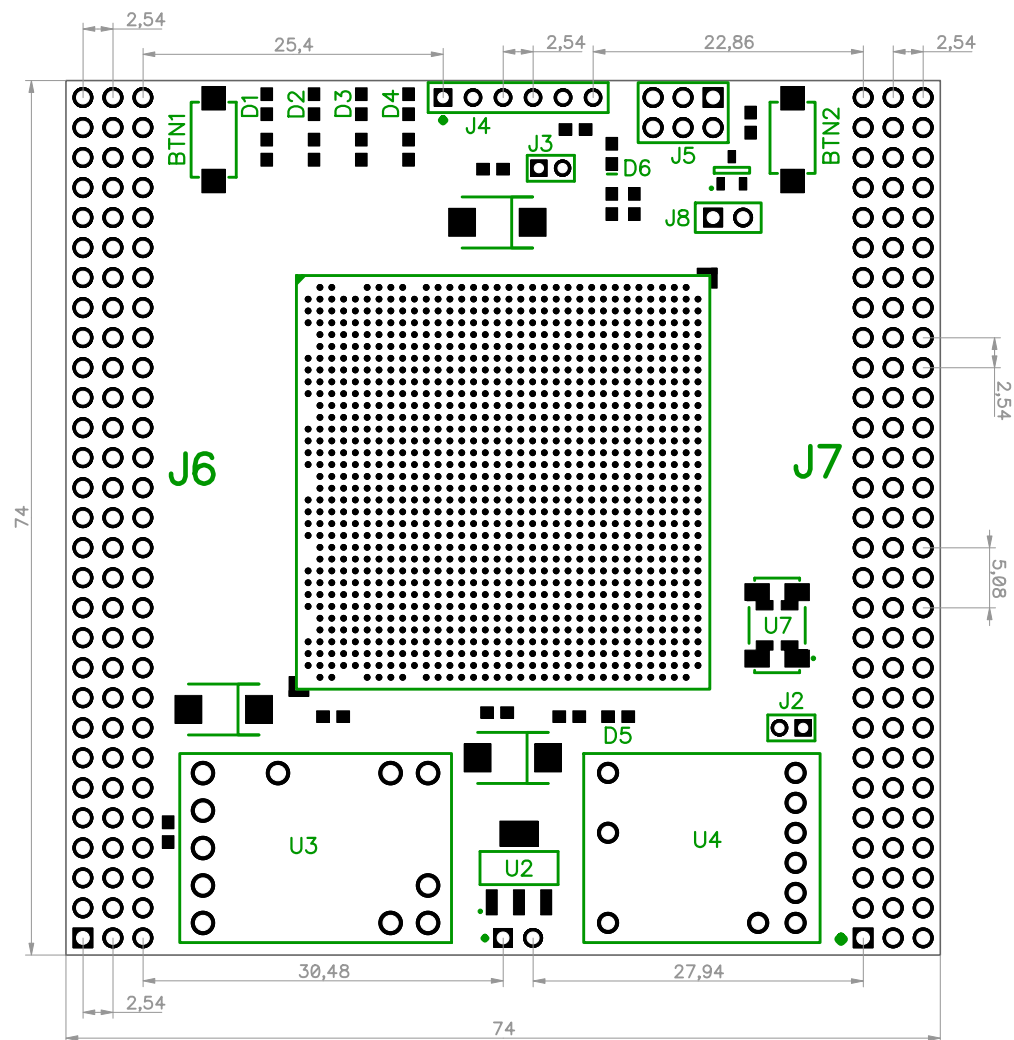




XILINX VIRTEX-5 FPGA MODULE			
MODEL: XM2F5-50-256 50M	Rev. A	29.04.2020	Sheet 3/4
IO CONNECTORS	PLDkit OU www.pldkit.com		

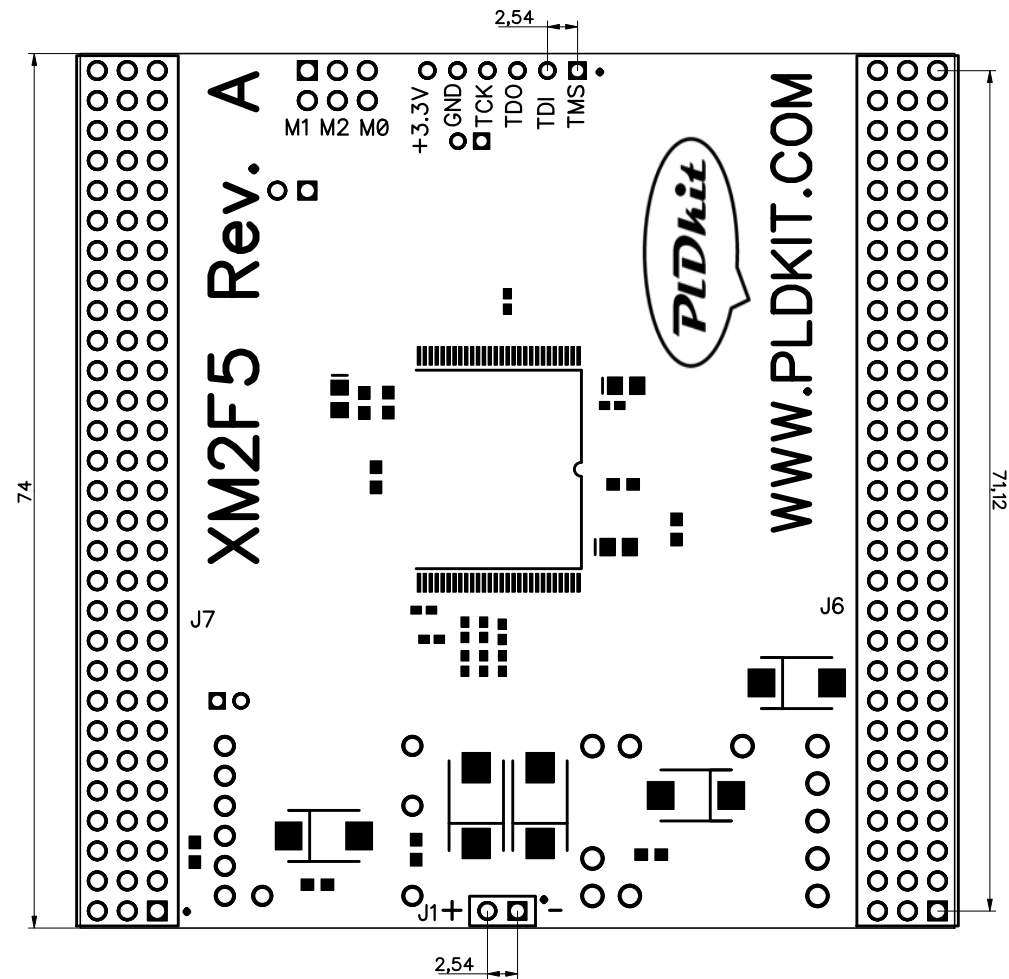


XILINX VIRTEX-5 FPGA MODULE			
MODEL: XM2F5-50-256 50M	Rev. A	29.04.2020	Sheet 4/4
UNUSED			PLDkit OU www.pldkit.com



All dimensions in mm

XILINX VIRTEX-5 FPGA MODULE			
MODEL: XM2F5	Rev. A	23.02.2020	Sheet 1/1
PCB LAYOUT			PLDkit OU www.pldkit.com



All dimensions in mm

XILINX VIRTEX-5 FPGA MODULE			
MODEL: XM2F5	Rev. A	23.02.2020	Sheet 1/1
PCB LAYOUT			PLDkit OU www.pldkit.com

